



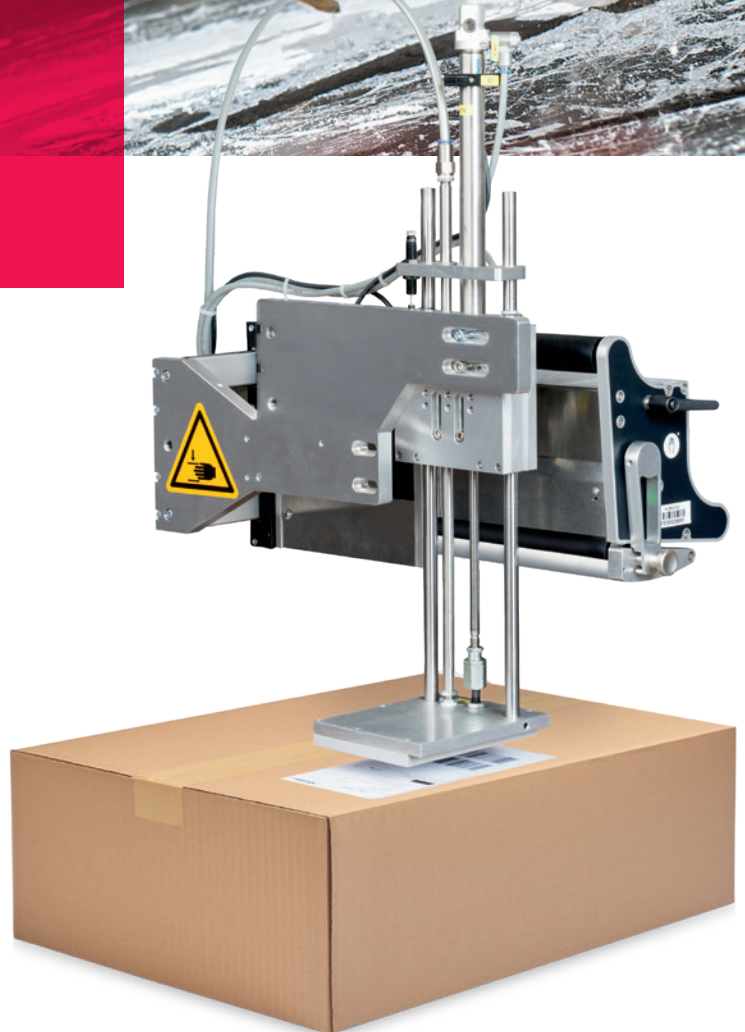
Top performance on all surfaces.

Applicators made by Logopak

Applicators usually work at high speeds during the labelling process, applying up to 14 million labels a year. This means the applicator has to carry out up to 28 million movements annually throughout its service life. Logopak applicators are designed for maximum performance, ensuring high uptime availability of 99.8 per cent, which is unrivalled on the market.

Logopak applicators guarantee accurate and reliable labelling of your products while our smart sensor technology gives you a comprehensive, at-a-glance overview of all relevant processes.

» **For maximum reliability
and label accuracy.**



Applicators made by Logopak

In constant contact with your product.



Best-practice solutions for every application

At Logopak, nothing's impossible! When it comes to labelling your products, whether large or small, with smooth or uneven surfaces, applied onto corners or convex surfaces, onto products moving along or coming to a stop on the conveyor, Logopak offers you a wide range of applicators for every requirement. Depending on the labeller's operating side, the conveyor's direction of movement (clockwise/anti-clockwise) and the machine's position, 56 different variants are possible. Our labels are available in many different sizes ranging from 35 × 30 mm to 300 × 420 to provide excellent flexibility.

High-quality components

All Logopak products are top of the range. When developing and manufacturing our applicators, we use exclusively high-quality materials such as anodised aluminium and stainless steel to ensure both a long service life and superior labelling results. We don't use any plastics or other materials prone to wear and tear for our applicators, which is the ideal prerequisite for many years of reliable service.

High-vacuum application technique

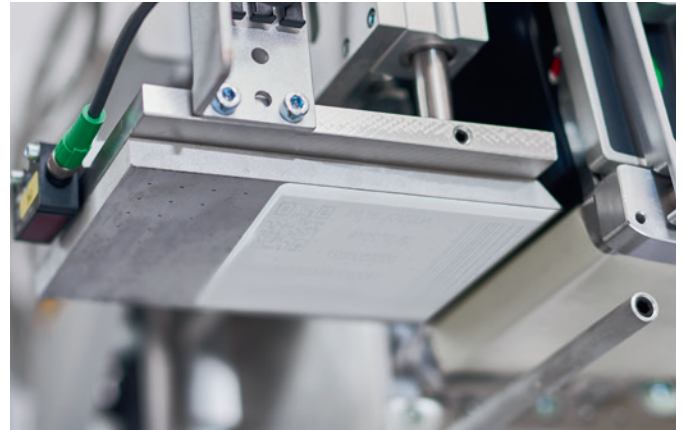
Some manufacturers install fans opposite their applicators' dispensing plates in order to create a vacuum during label application. However, in most cases these fans are not only prone to error, but are often not powerful enough to reliably hold the labels on the dispensing plate, resulting in labels falling off before reaching the product.

Logopak applicators use a high-vacuum technique (Venturi principle) to ensure the printed label is securely held on the dispensing plate while being transferred to the product. Since noise cannot be avoided when working with high vacuum air flow rates, Logopak applicators are equipped with silencers to ensure low-noise operation.

Print & apply in real time

Logopak labellers provide fast and efficient print & apply processes in real time. The printed label is transferred to a vacuum plate (dispensing plate) and applied to the product by a telescopic system using gentle pressure and compressed air.

» **Offering a wide range of applicators, Logopak has the right solution for every individual requirement and any specific project. Please contact us for professional advice from our experts.**



Maximum label control

Continuous and reliable vacuum control through state-of-the-art sensor technology is one of the distinctive features of Logopak applicators. You can be sure that every product is accurately labelled. "Trial-and-error" experiences are a thing of the past, because the system changes from "vacuum" to "blow-on" mode only when the applicator touches the product or when signalled by a light barrier.

Reliable pressure control

All Logopak applicators are equipped with a pressure switch providing reliably excellent labelling processes. An integrated sensor constantly measures the compressed air supply to ensure the pressure doesn't fall below the required minimum. If the air pressure is too low, the sensor immediately signals a fault, and the machine stops to avoid unexpected malfunction.

Gentle label application

When applying labels via a telescopic system, it is important that the applicator doesn't apply too much pressure on the product to avoid both increased wear and tear, and damaging the product. Logopak applicators are equipped with pressure reducers, including a visual control display to ensure accurate, yet gentle label application.

Contactless application

Contactless label application is yet another benefit provided by many of Logopak's applicators. They switch from vacuum to blowing at exactly the right moment to blow the label onto the product. The main advantage in comparison to applicators with product contact, particularly in throughput operation, is that shear movement is avoided.

Valves can be replaced quickly

Many manufacturers install the valves inside their label machines, which makes them difficult to access in the event of a malfunction. Hoses and cables have to be removed with considerable effort. Logopak applicators are equipped with an integrated hand function allowing rapid manual testing of the valves. Defective valves are quickly identified and can be replaced with very little effort.

Your benefits at a glance:

- » Ideal solutions for every application
- » Wide range of applicators and labels available
- » Maximum reliability and accuracy due to our smart sensor technology
- » Long service life due to high-quality components
- » Easy maintenance

Applicators made by Logopak

The perfect solution for your system.



Selecting the right applicator largely depends on your individual application requirements. Please don't hesitate to contact us. Logopak has the perfect applicator solution for every labelling system by offering you over 50 different variants including countless labels of various different shapes and sizes.

» **We will be happy to provide advice in planning your system and find the best solution for your individual requirements.**

Logopak Systeme GmbH & Co. KG

Dorfstraße 40-42 · D-24628 Hartenholm · Tel: +49 (0) 4195 9975-0 · Fax: +49 (0) 4195 1265 · E-Mail: info@logopak.de · www.logopak.de